

CASTOR C-5010

The flattest horizontal scan solution

The Castor is the high-performance food retail bar code scanner and the pearl under the horizontal scanners. Designed from a quality point of view, the Castor comes with a stainless steel top deck to ensure a long lifetime and with a metal housing. The Castor is well protected against harmful interference from the moving belt's motor and against electrical static discharge from the operator. With real vertical scan lines, the need to lift and tilt a product being scanned has disappeared and operator fatigue is reduced. Consequently, checkout efficiency increases. Like all other Scantech scanners, the Castor is optimised for EAS integration and is compatible with today's market solutions.

transparent



solid

unique



General information

The Scantech Castor C-5010 is the flattest and most rugged retail bar code laser scanner. With a great design and proven reliability, the Castor C-5010 is optimised for horizontal scanning. Scantech's Scantium decoder will ensure optimum performance on all occasions for multi-decoding tasks.

Cost of ownership

The Castor features Scantech's unique and patented Goldrush polygon technology. Evaporated gold on the polygon makes it ultra light, giving longer motor life and faster "wake-up" times from the energy saving sleep mode. In addition, a flash EPROM gives the possibility to upgrade the firmware within the twinkling of an eye. Thanks to a shockproof scanner housing suspension, the Castor is also well protected against shocks.

Reading of damaged bar codes

Thanks to the specially developed STAR software, the Castor can easily read truncated, damaged and substandard bar codes. The special code stitching intelligence enables the Castor to reconstruct the damaged code.

Ergonomics

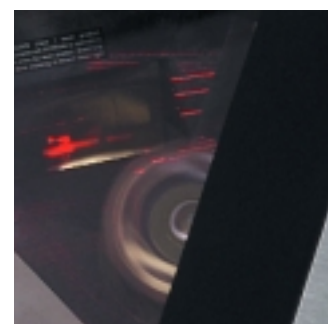
The Castor is the flattest horizontal scanner on the market. The Castor's height is only 75 mm! This ensures a flexible and ergonomic installation under all circumstances.

Flexibility

The Castor comes in two interface versions: RS232 and OCIA or IBM RS485 and Keyboard Wedge. Furthermore, the Castor is standard equipped with an auxiliary port for connecting other Scantech scanners. For example a hand held scanner can be connected for heavy or voluminous products.

CASTOR C-5010 specifications

Physical depth: 75 mm • width: 205 mm • length: 240 mm • weight: 2,5 kg **Dual interfaces** RS232C - OCIA • IBM RS485 - KBW **Electrical** power supply voltage: 100 - 240 V ac, 50/60 Hz • DC input to scanner (aux. port not in use): +12 V dc (510 mA), -12 V dc (25 mA), +5 V dc (300 mA) **Optical** light source: visible laser diode 670 nm 5-field, 15 lines scan pattern • scan rate: 1500 scans/second • depth of scan field: 300 mm **Operating environment** 0°C to 40°C • relative humidity to 95% (non-condensing) **Supported codes** EAN/UPC/JAN including AddOn • code 128 • EAN 128 • code 39 • code 32 • codabar • interleaved 2/5 **Compatibility** EAS compatible



SCANTECH ID

Scantech-ID BV

Amersfoortsestraat 124
3769 AN Soesterberg
The Netherlands
Tel +31 (0)33 469 84 00
Fax +31 (0)33 465 06 15
info@scantech-id.com
www.scantech-id.com

Safety

The Castor C-5010 complies with:

- laser safety IEC 825-1 (1993) Class I, U.S. 21CFR1040 Class IIa
 - electrical safety EN 60950 (second edition), UL1950 (third edition), c-UL (according CSA22.2.950-95)
 - radio and tv interference EN 55022 Class B (1994), FCC part 15 Class A (1992)
 - radio frequency immunity EN 50082-1 (1992)
 - harmonic current emissions EN 61000-3-2 (1995)
- Specifications may change without prior notice.**

